

WHAT'S HAPPENING IN SAXONY & **UPPER AUSTRIA?**

A highly active passive house

MIVA ChristophorusHaus

Location: Stadl-Paura

Building Type: office with 20 people, meeting room, commercial space, and vehicle bays

Architect: Albert Bohm and Helmut Frohnwieser

Year built: 2003 (in 9 months)

Size: 1,027 m²

Cost: 2.6M Euro



MIVA

Enclosure:

- Prefabricated wood panels with a timber frame (by Obermayr in 9 days)
- Triple glazed windows
- Combination of hemp and cellulose in walls, mineral wool in the roof

Mechanical System:

- Solar thermal
- ERV with ground coupling
- Ground sourced heat pump with radiant heating and cooling
- Rainwater collection and greywater reuse



MIVA

Energy Standard:

PassivHaus- Germany

Energy Use:

- 14 kWh/m² A for heating
- 49 kWh/m² A primary!!

Remarkable Features:

- Biophilic atrium
- Amazing daylight and views
- Serenity

Potential Issues:

- None in design or construction
- Noted that the use of the atrium and a single stair as designed is not permitted in the USA

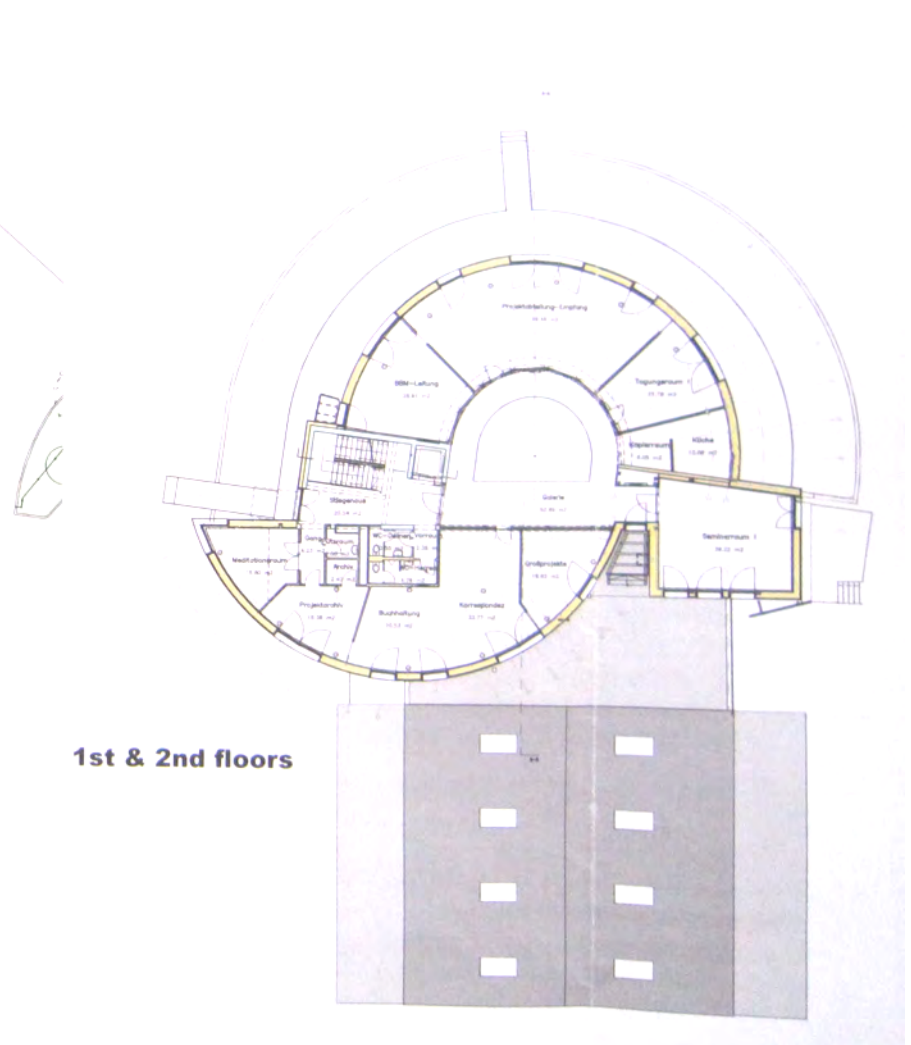
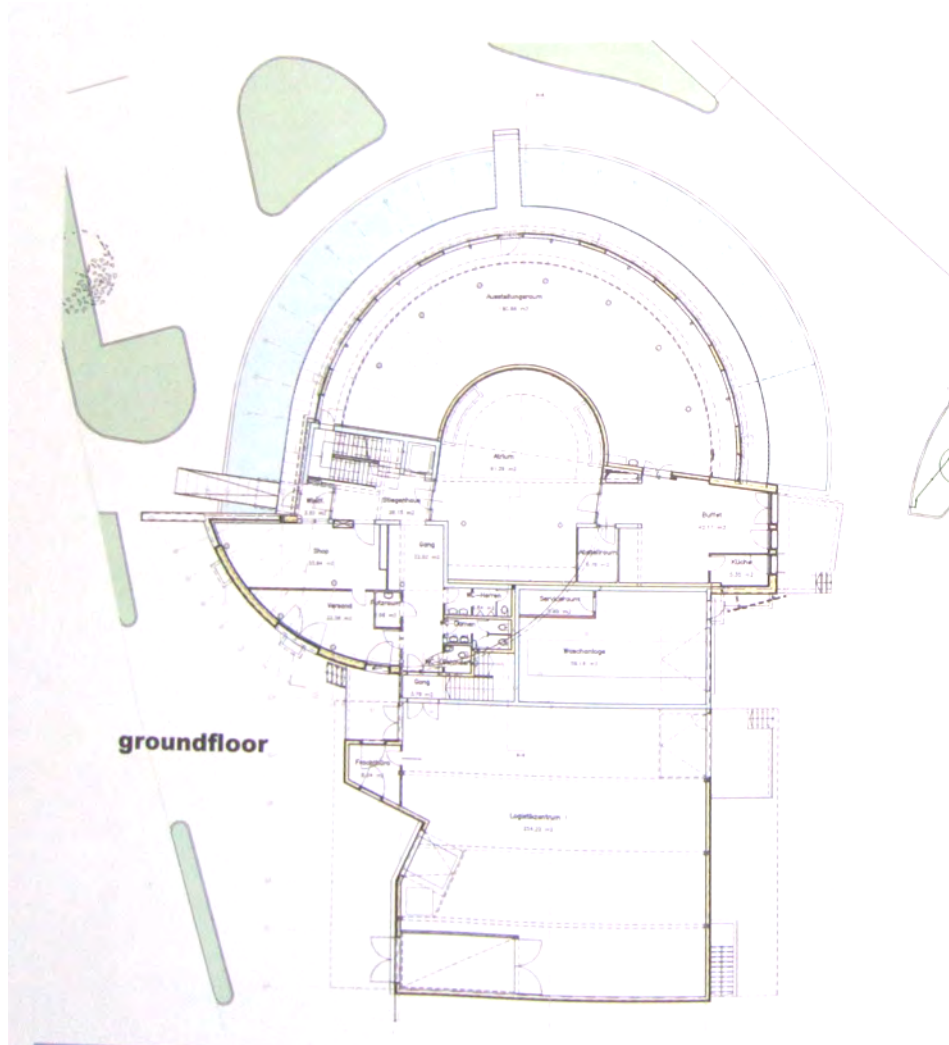


MIVA



MIVA

Floor plans



MIVA

View from the Southwest



MIVA

Rainwater collection and graywater treatment for 50% of water use



MIVA

The craft of mechanicals and windows



MIVA



MIVA



MIVA

Interior Views and natural Daylighting

the lights are mostly off,
and there was very little
glare as the shades are on a
central controller

