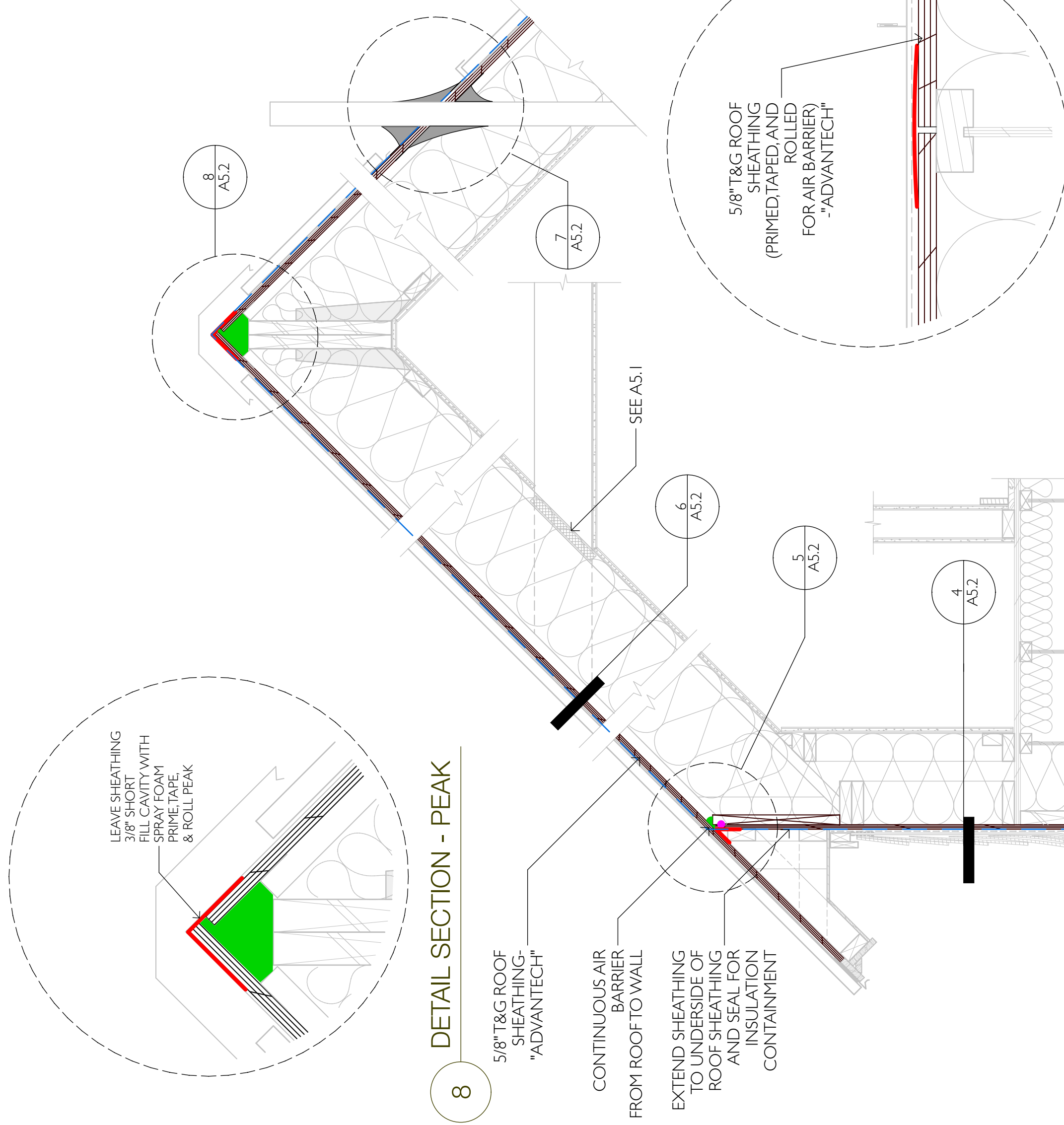


8
DETAIL SECTION - PEAK

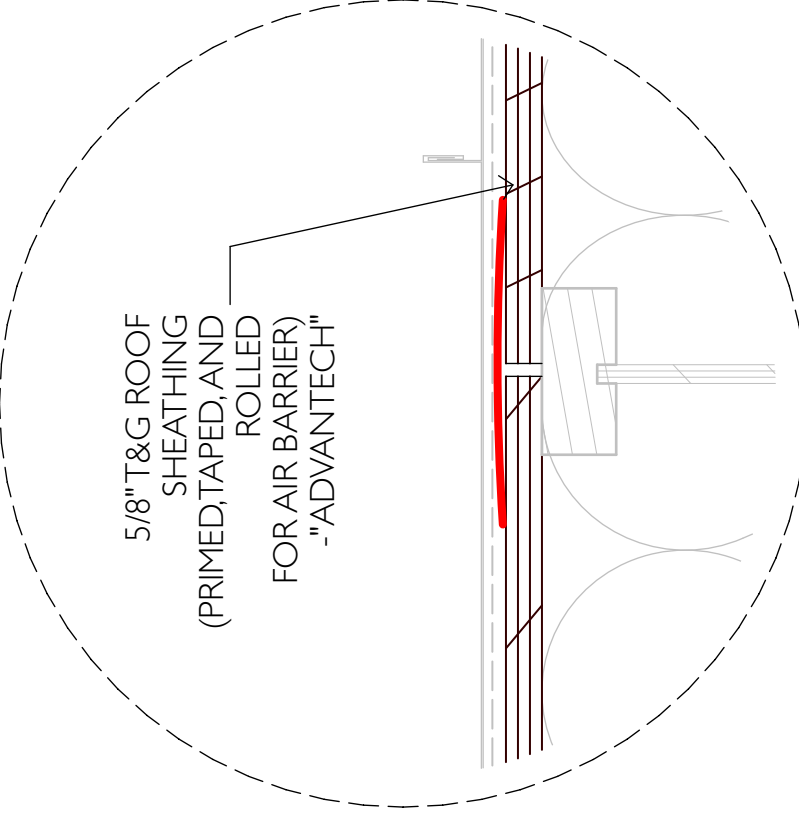
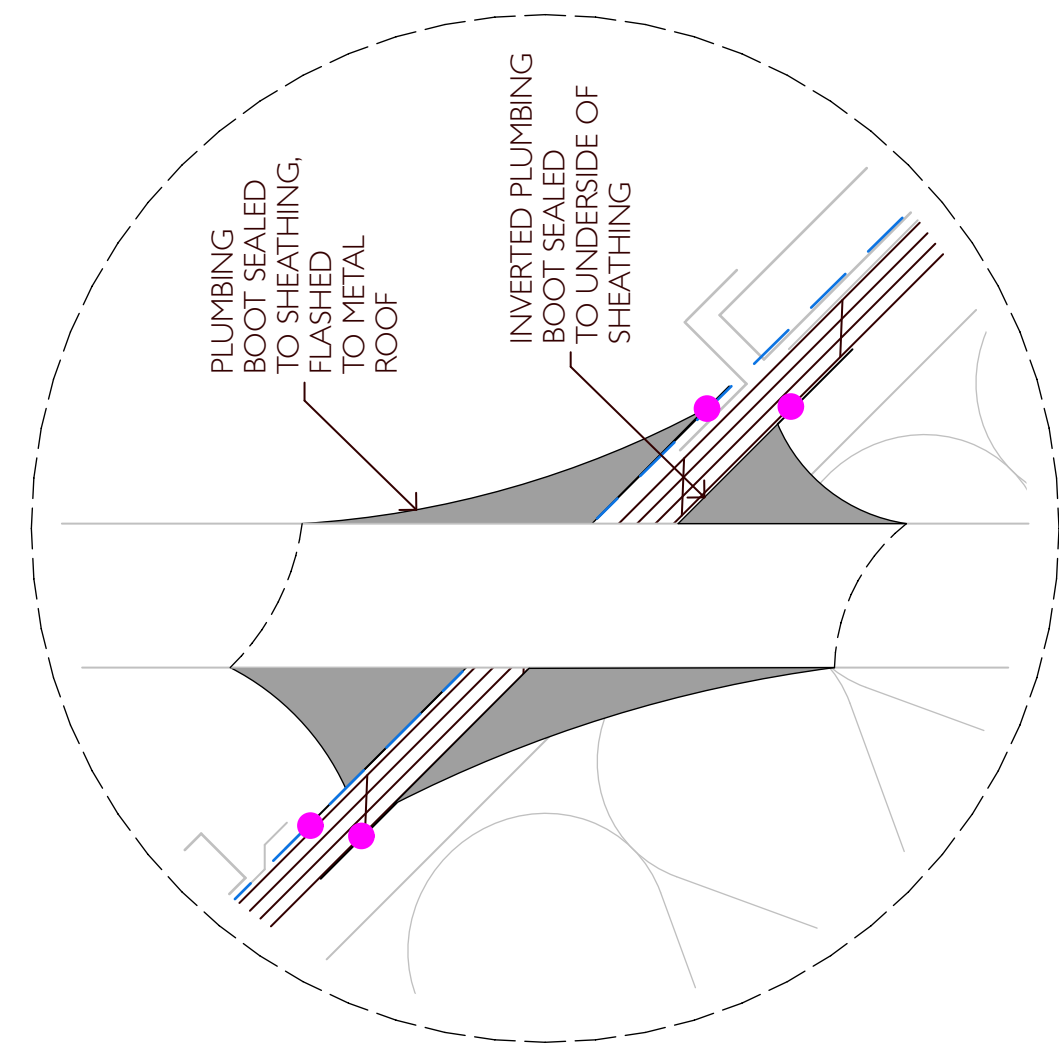
5/8" T&G ROOF SHEATHING - "ADVANTECH"

CONTINUOUS AIR BARRIER FROM ROOF TO WALL

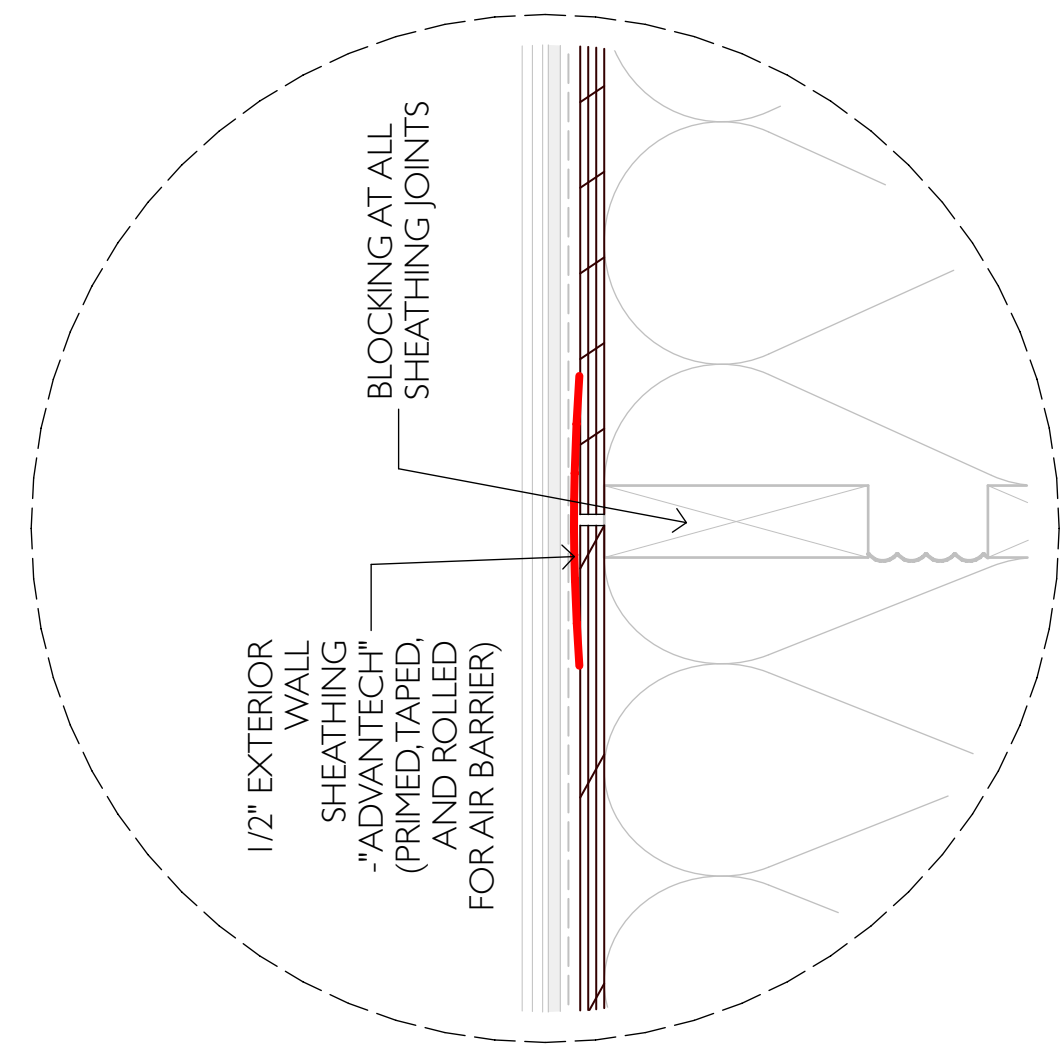
EXTEND SHEATHING TO UNDERSIDE OF ROOF SHEATHING AND SEAL FOR INSULATION CONTAINMENT



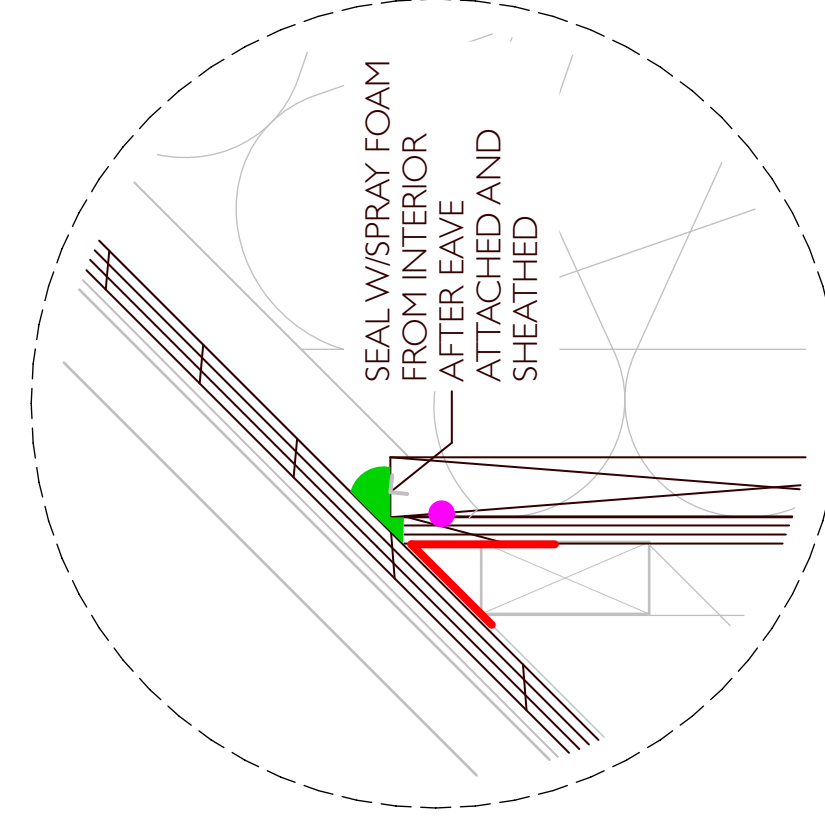
7
DETAIL SECTION - ROOF PENETRATION



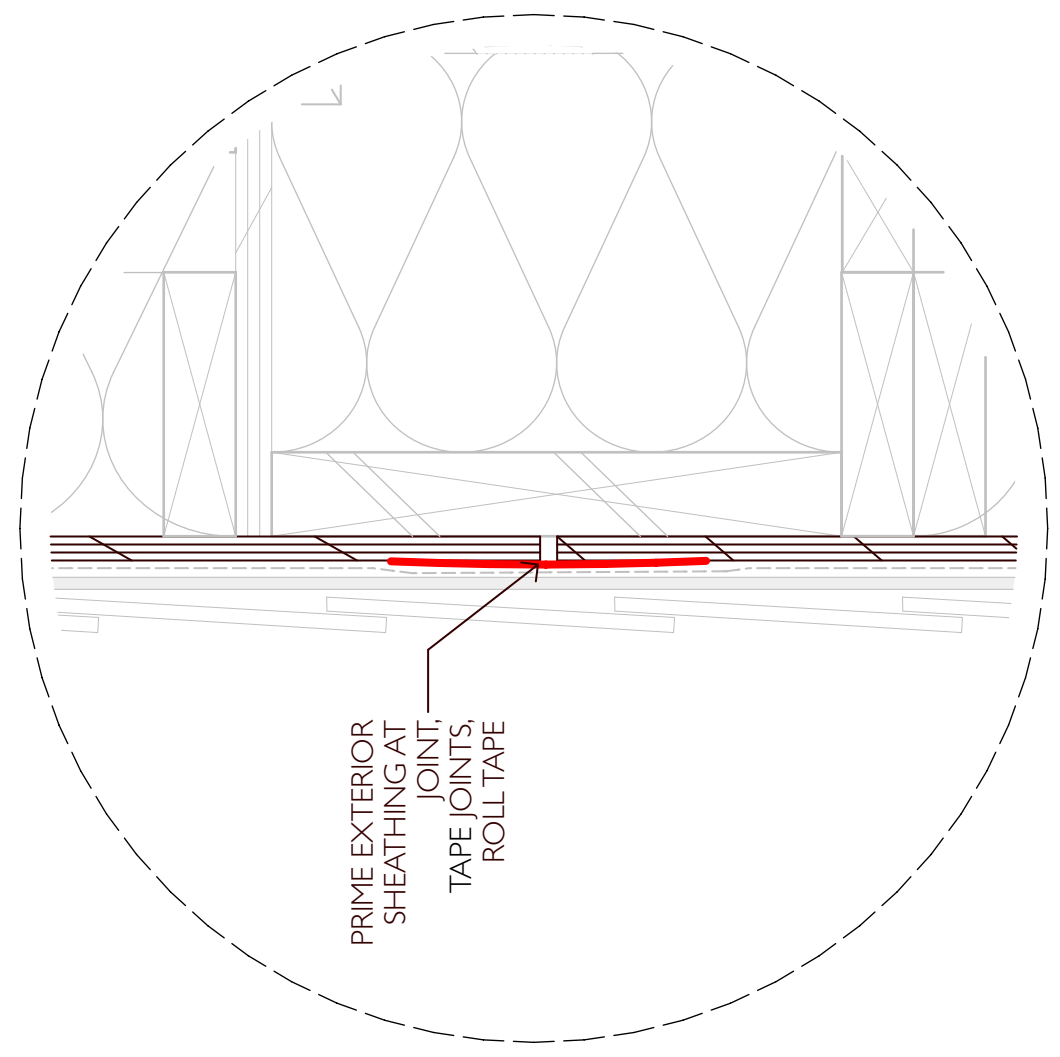
6
DETAIL PLAN SECTION - ROOF



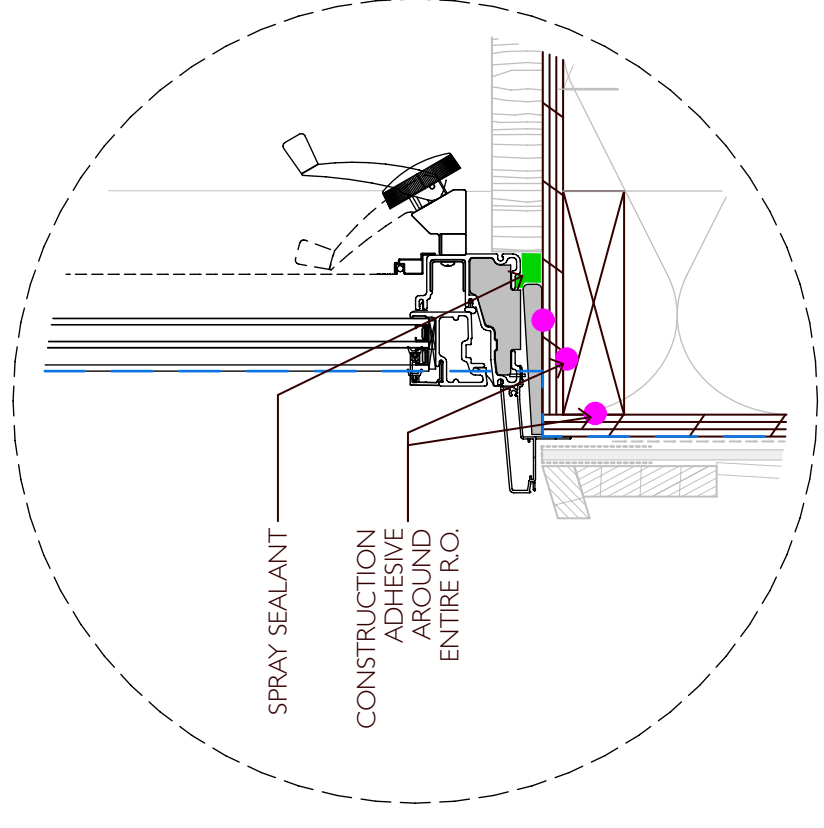
4
DETAIL PLAN SECTION - WALL



5
DETAIL SECTION - WALL TO ROOF



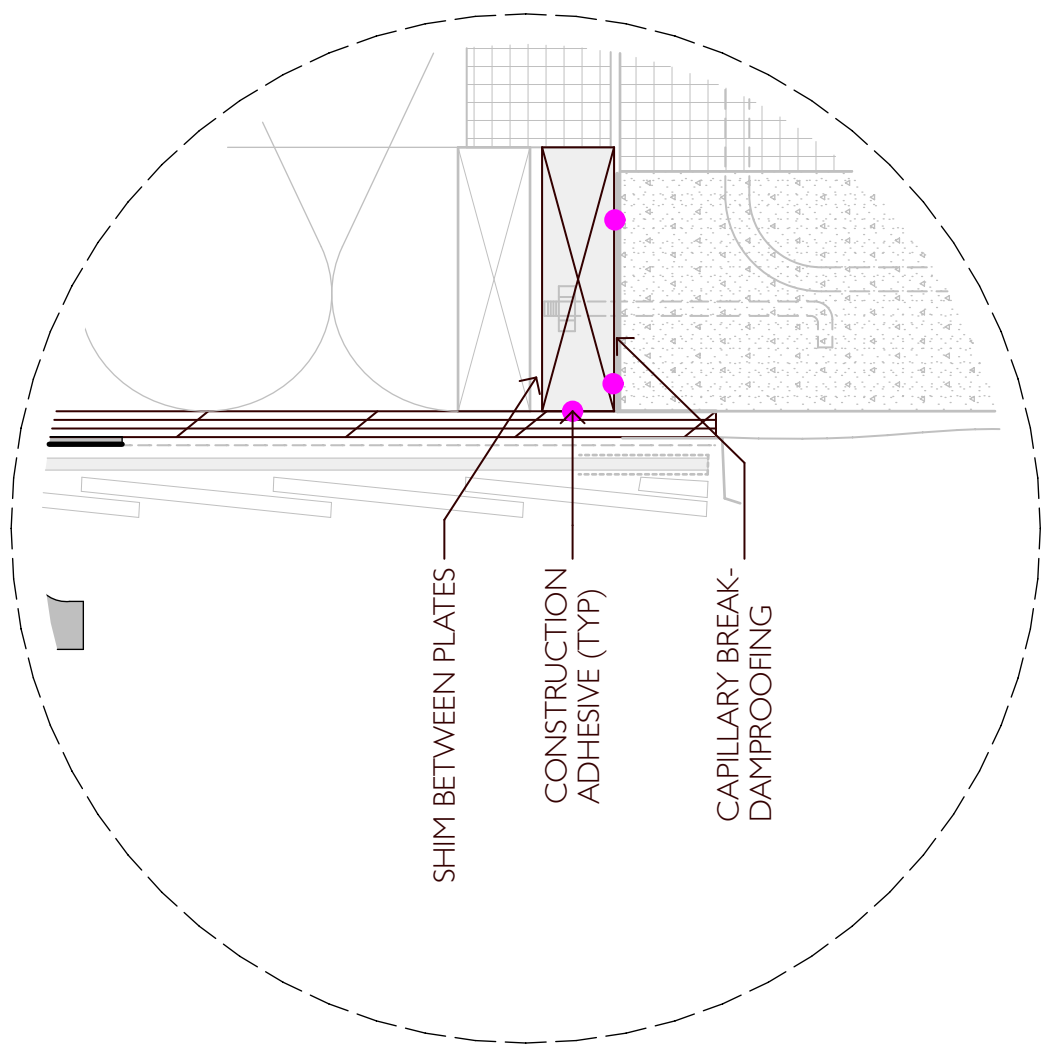
2
DETAIL SECTION - EXT. SHEATHING



3
DETAIL SECTION - WINDOW

SEE A9.1 FOR WINDOW INSTALLATION AND AIR SEALING COORDINATION

AIR SEALING KEY	
	ACTIVE AIR SEALING COMPONENTS (DARK ELEMENTS)
	SPRAY SEALANT
	CONSTRUCTION ADHESIVE
	TAPED JOINT (AIR SEALING)
	CONTINUOUS AIR BARRIER



1
DETAIL SECTION - T.O.F.

BLOWER DOOR TEST -
For 1 ACH @ 50 Pascals
64, 984 cubic feet / 60 min. = 1,083 CFM



College of the Atlantic

STUDENT HOUSING
BAR HARBOR, MAINE

TYP WALL SECTION
AIR SEALING

Date: see above
Project No. 03-11
Scale: Various
Drawn by: -
Checked by: -

A5.2

REVISIONS
01 MARCH 2007
FOR CONSTRUCTION

This drawing is not intended, nor shall be used for, construction, unless the signed professional seal of a Registered Architect or Consultant of Coldham & Hartman Architects is affixed.

© 2017 Coldham & Hartman Architects

Architect's Consultants
Structural Engineering
Ryan S. Hellwig, P.E.
Northampton, MA
Mechanical Engineering
Petersen Engineering
Portsmouth, NH
Lighting and Electrical Engineering
Bartlett Design
Bath, ME

Owner's Consultants
Energy and Systems Consultant
Energysmiths
Mendon, NH
Landscape Architecture
Coplon Associates
Bar Harbor, ME
Civil Engineering
Hedefine Engineering & Design, Inc.
Hancock, ME

c&h architects
amherst, ma
candharchitects.com