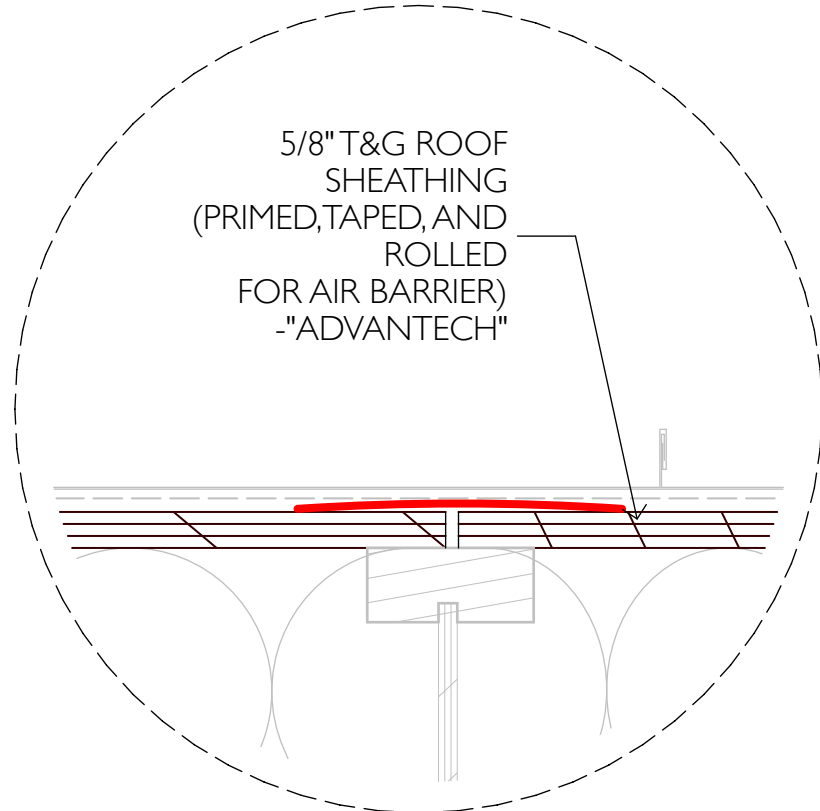
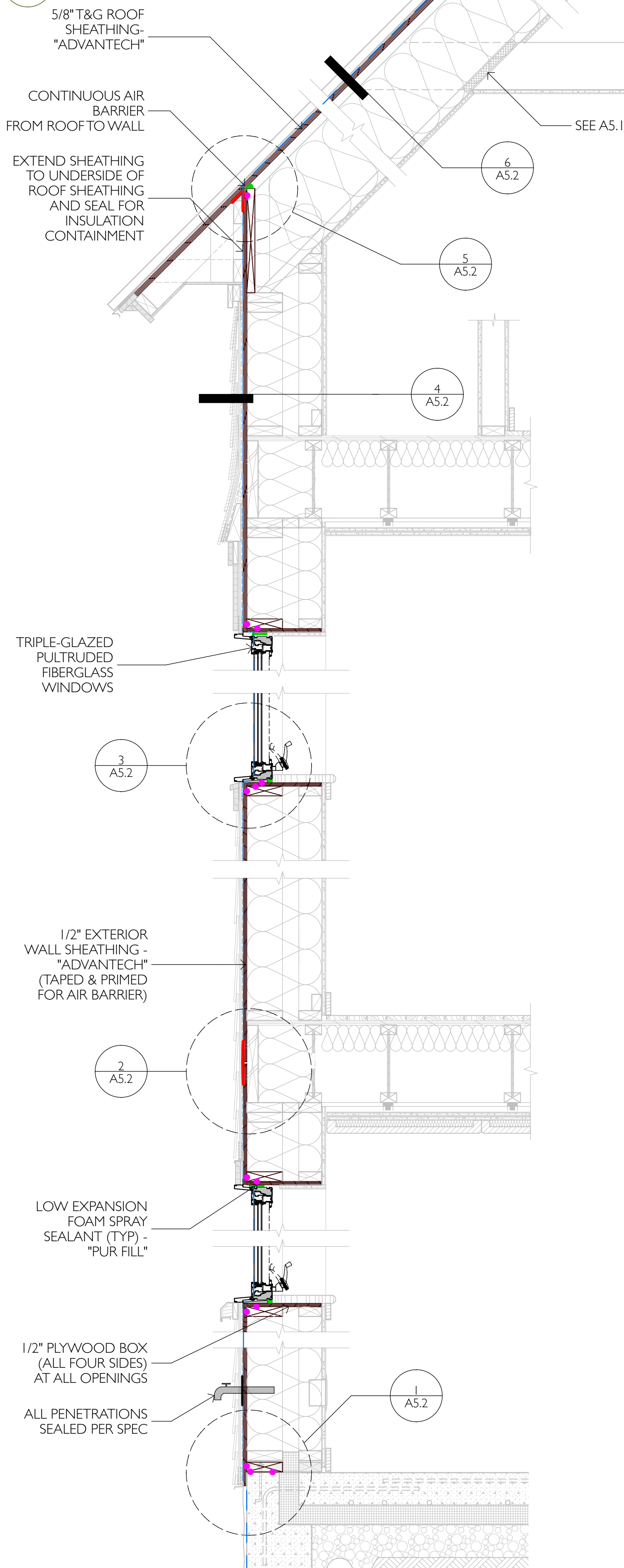
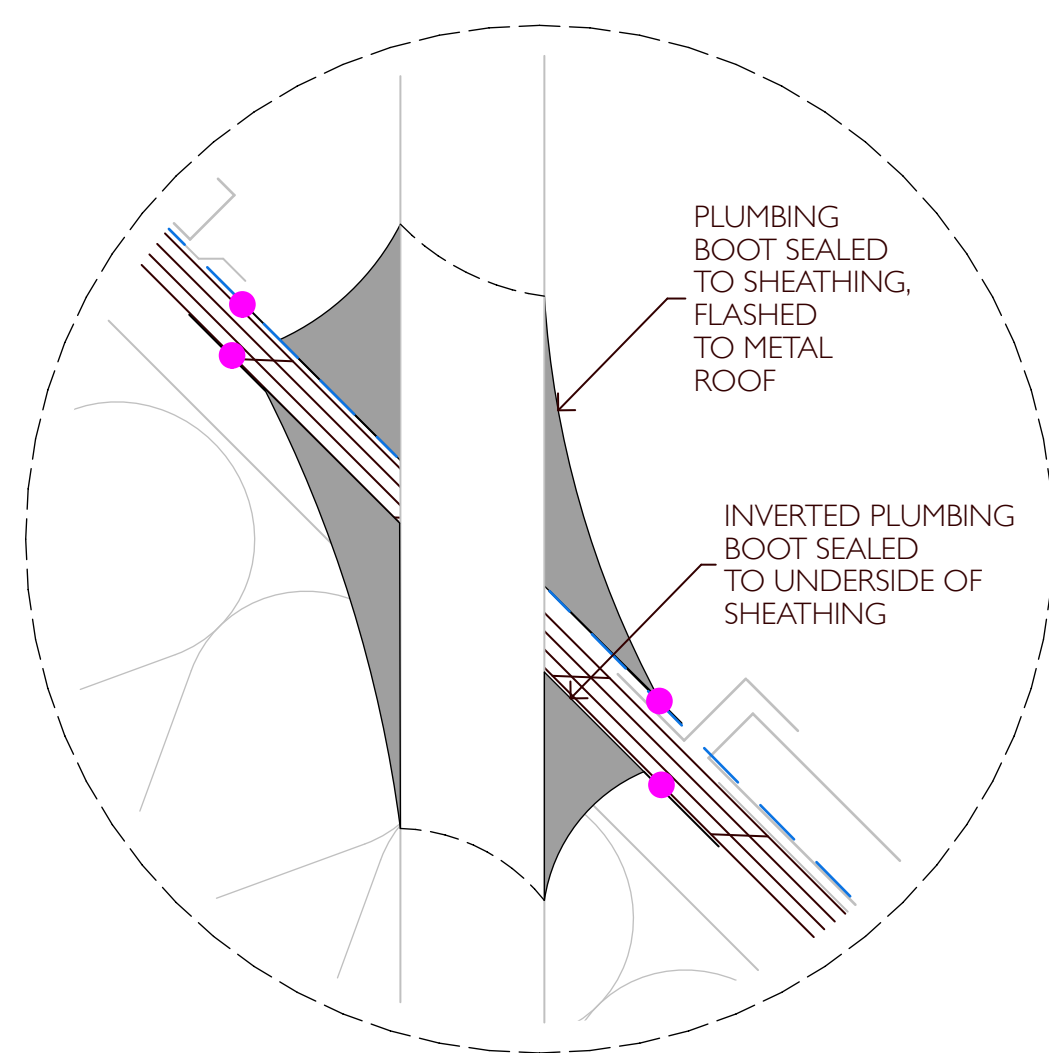


LEAVE SHEATHING
3/8" SHORT
FILL CAVITY WITH
SPRAY FOAM
PRIME, TAPE,
& ROLL PEAK

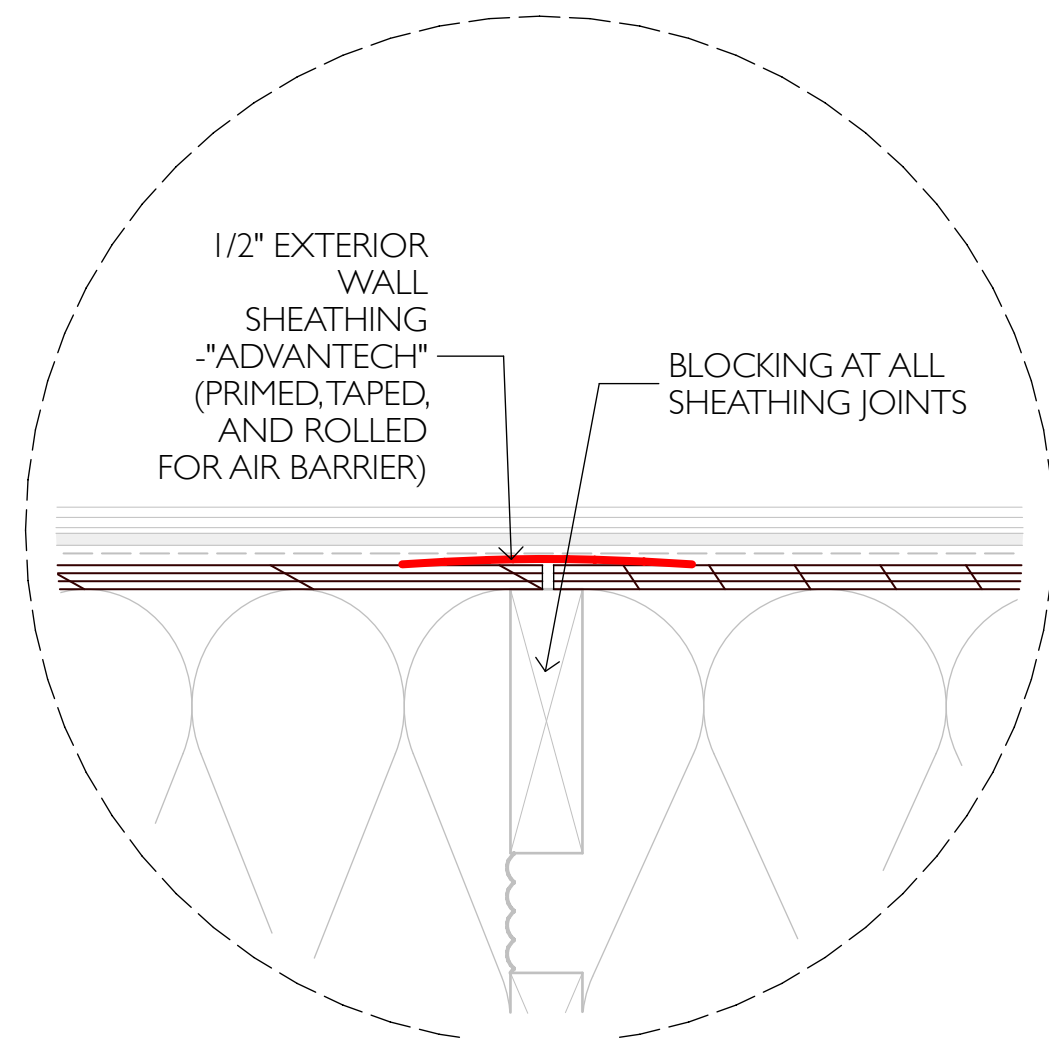
8 DETAIL SECTION - PEAK



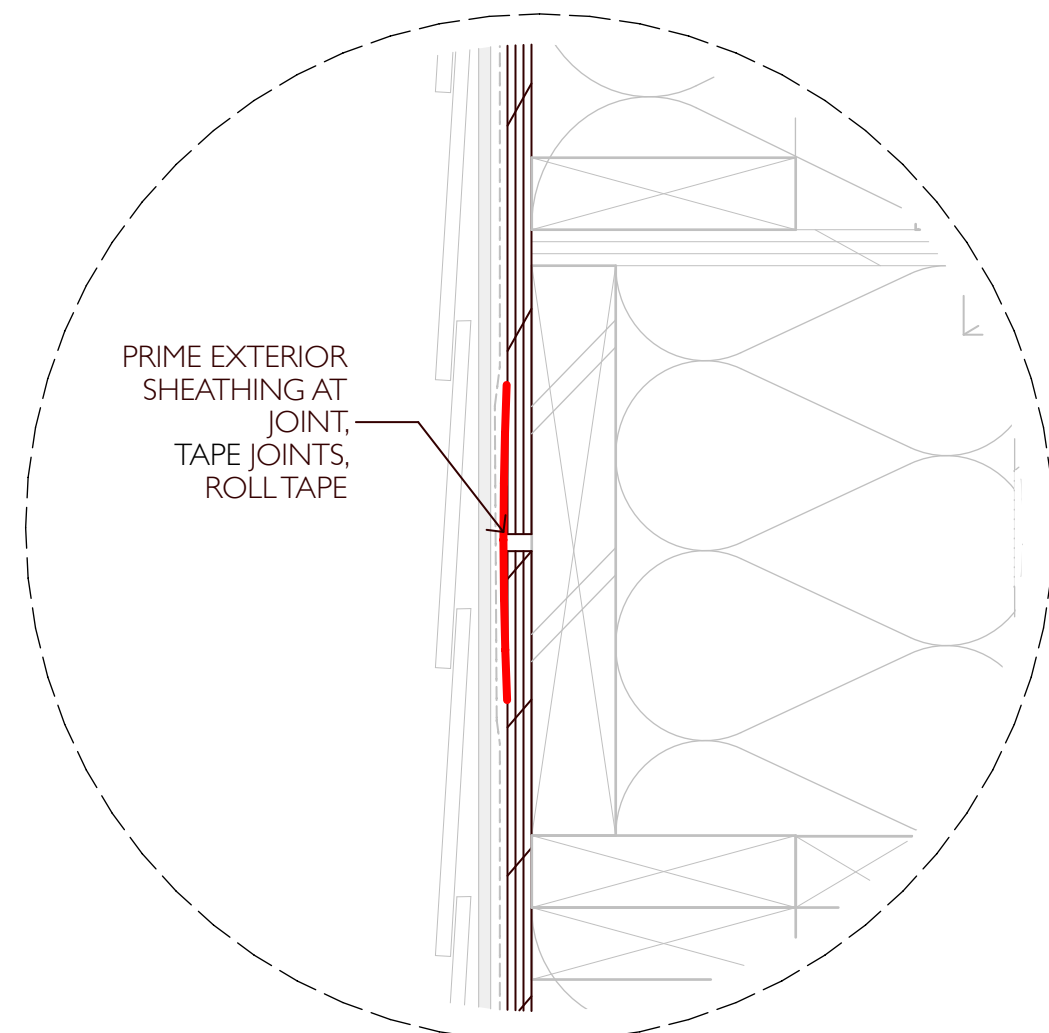
6 DETAIL PLAN SECTION - ROOF



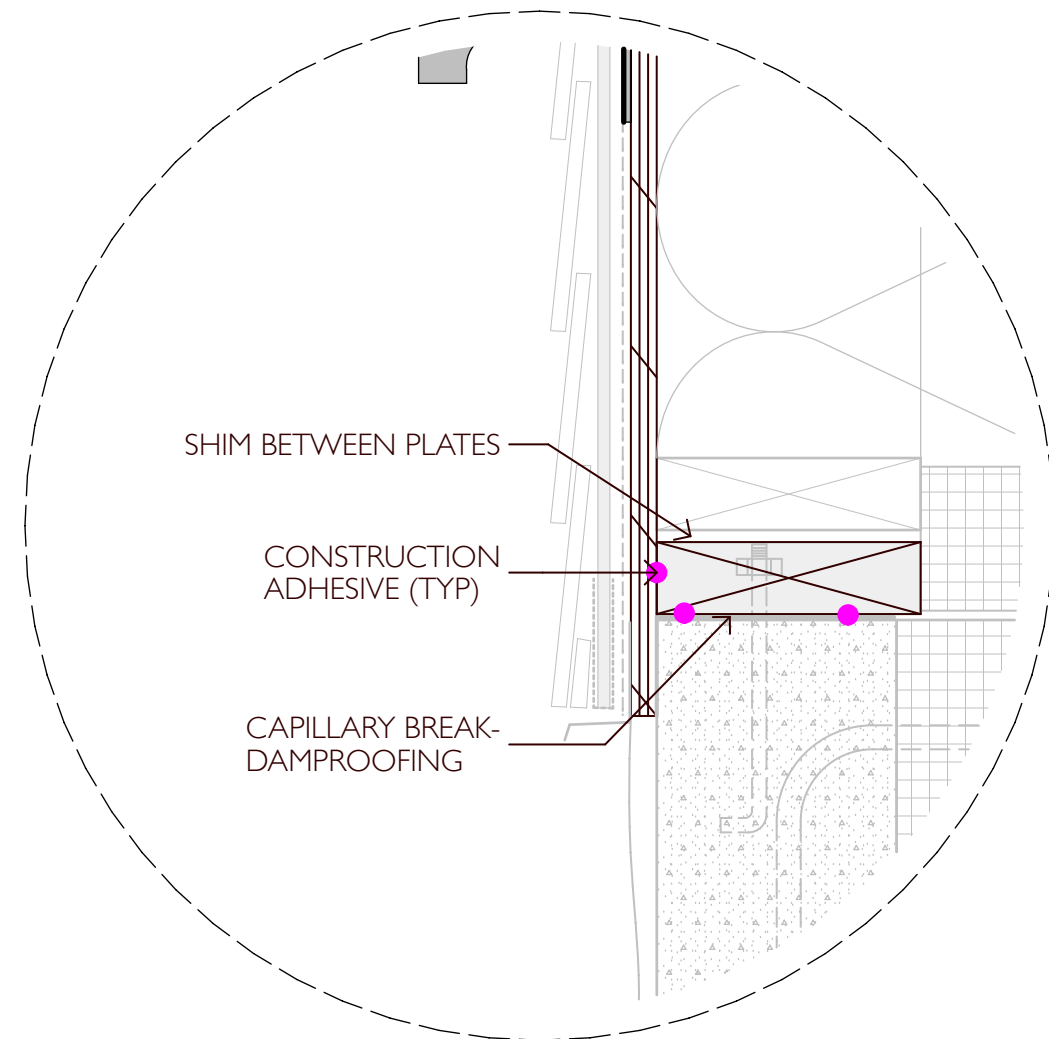
7 DETAIL SECTION - ROOF PENETRATION



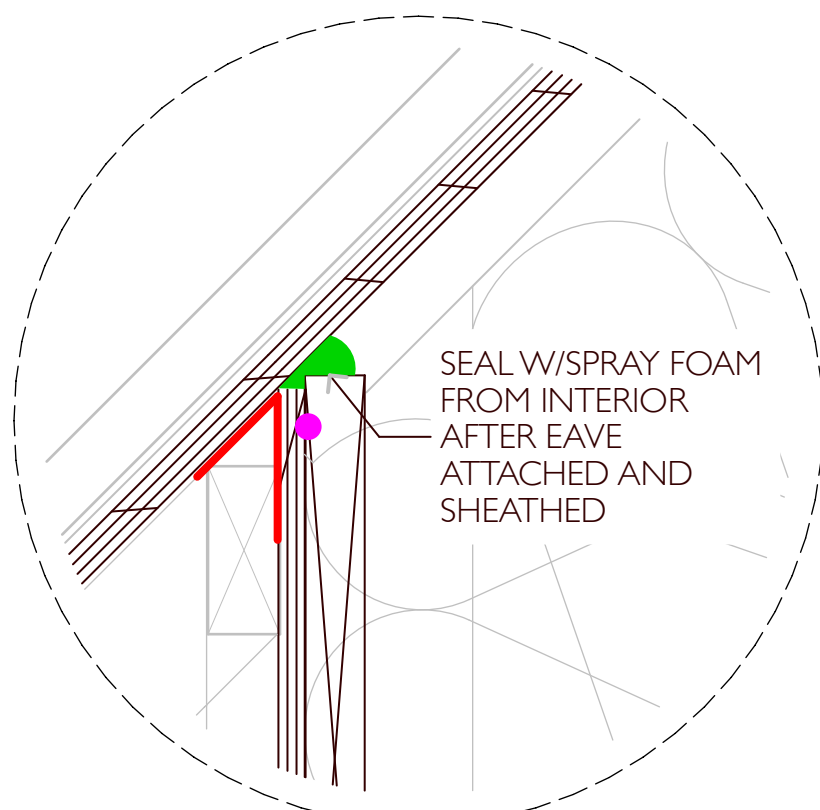
4 DETAIL PLAN SECTION - WALL



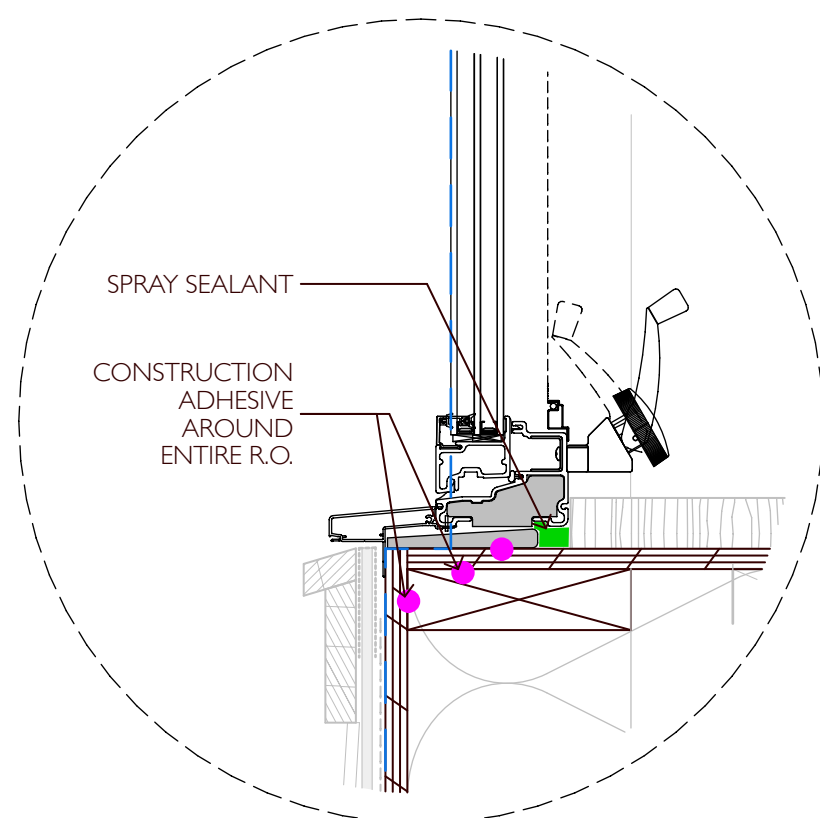
2 DETAIL SECTION - EXT. SHEATHING



1 DETAIL SECTION - T.O.F.



5 DETAIL SECTION - WALL TO ROOF



3 DETAIL SECTION - WINDOW

SEE A9.1 FOR WINDOW INSTALLATION
AND AIR SEALING COORDINATION

AIR SEALING KEY

- ACTIVE AIR SEALING COMPONENTS (DARK ELEMENTS)
- SPRAY SEALANT
- CONSTRUCTION ADHESIVE
- TAPED JOINT (AIR SEALING)
- CONTINUOUS AIR BARRIER

BLOWER DOOR TEST -
For 1 ACH @ 50 Pascals
64, 984 cubic feet / 60 min. = 1,083 CFM

College of the Atlantic

STUDENT HOUSING
BAR HARBOR, MAINE

REVISIONS

01 MARCH 2007
FOR CONSTRUCTION

© 2017 Cochran & Hartman Architects

This drawing is not intended, nor shall be used for,
construction, unless the signed professional seal of a
Registered Architect or Consultant of Cochran &
Hartman Architects is affixed.

**Architect's
Consultants**
Ryan S. Helling, P.E.
Northampton, MA
Mechanical Engineering
Petersen Engineering
Portsmouth, NH
Lighting and Electrical Engineering
Bartlett Design
Bath, ME
**Owner's
Consultants**
Energy and Systems Consultant
EnergySmiths
Merriden, NH
Landscape Architecture
Coplin Associates
Bar Harbor, ME
Civil Engineering
Hedefine Engineering
& Design, Inc.
Hancock, ME

c&h architects
candharchitects.com amherst, ma

TYP WALL SECTION
** AIR SEALING **

Date: see above
Project No. 03-11
Scale: Various
Drawn by: --
Checked by: --

A5.2